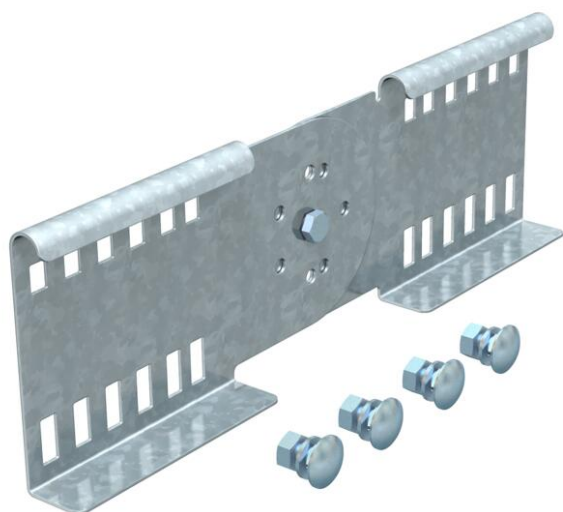


# Technical data sheet

## Adjustable connector 110 FT SOMY

Item number: 7190590



Adjustable connector as internal connector to join cable ladders and fittings with a side height of 110 mm. Angle can be adjusted vertically.

The bolt fastening ensures the continuity of the equipotential bonding.



St Steel

FT SO Hot-dip galvanised 85 µm

### Master data

Item number	7190590
Type	LGVG 110VS FTSO
Description 1	Adjustable connector
Description 2	for cable ladder
Manufacturer	OBO
Dimension	114x360
Material	Steel
Surface	Hot-dip galvanised 85 µm
Surface standard	DIN EN ISO 1461
Smallest sales unit	10
Unit of quantity	Piece
Weight	83.8 kg
Weight unit	kg/100 pc.

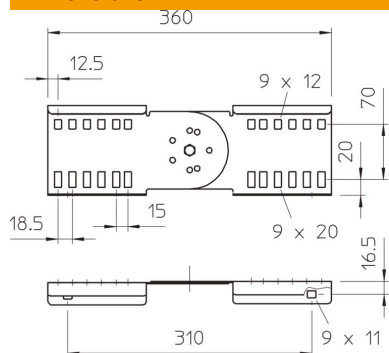
# Technical data sheet

## Adjustable connector 110 FT SOMY

Item number: 7190590



### Dimensions



Length	360 mm
Width	28 mm
Height	110 mm

### Technical data

Version for	Straight and angle connector
Suitable for mesh cable tray	no
Suitable for cable ladder	yes
Suitable for cable tray	no
Suitable for cable tray system height	110 mm
Adjustable connector, horizontal	no
Articulated connector, vertical	yes
Rustproof steel, pickled	no
Connection type	Screw connector